



ASSEMBLY GUIDE

Apache 52" Zero Turn Steer Ride On Mower





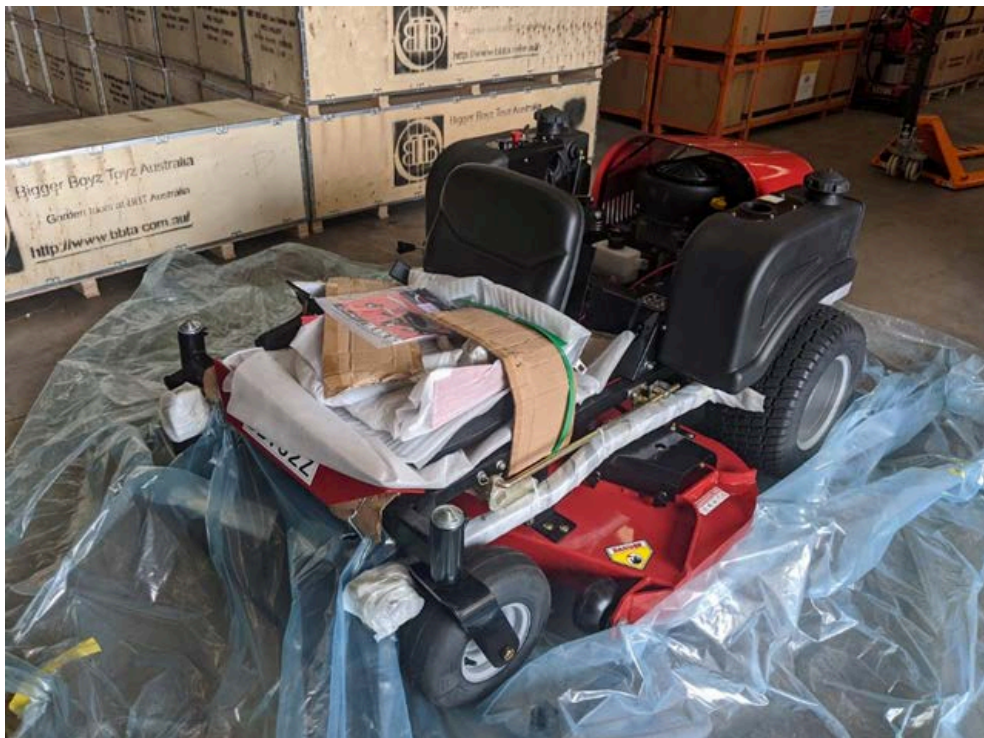
Table of Contents

Table of Contents.....	2
Step 1: Unboxing.....	3
Step 2: Removing all accessories.....	4
Step 3: Untying from the cage.....	5
Step 4: Strapping the mower up.....	6
Step 5: Lifting the mower up.....	7
Step 6: Getting rid of the cage.....	8
Step 7: Installing the seat.....	9
Step 8: Plug the sear sensor.....	10
Step 9: Connect the battery terminal.....	10
Step 10: Check engine oil level.....	11
Step 11: Grease the grease nipples (7 points).....	11-12
Step 12: Connect the control handles.....	13
Step 13: Install the roll cage.....	14-15
Step 14: Starting the Zero Turn Mower.....	16-18



Step 1: Unboxing

Cut and remove all plastic away from the Zero Turn (or as much as you can) to expose the base of the mower.





Step 2: Remove all accessories

- Roll cage (3pcs)
- Side Chute + Side Chute Cover
- Mulching blades
- Seat
- Control Lever Handles (2pcs)
- Manual w/ Keys and spare fuse





Step 3: Untying from the cage

Go around the mower and remove all wires holding the zero turn to its cage (you may need to use bolt cutters or a good pair of wire cutters). Be sure to do a second walk around to ensure all wires are cut or the zero turn will stay attached to the cage.





Step 4: Strapping the mower up

Using appropriate lifting slings of the same length attach to each corner of the zero turn ensuring knots are tight and wont slip. Attach the slings diagonally across the mower to ensure the lifting point is centered with the weight. (the best way to do this is feed the strap through itself on one side and use an appropriate D shackle on the other side)





Step 5: Lifting the mower out

When lifting the zero turn out you need to be sure what you are using is capable, as the dry weight of the mower is 450kg. When using a forklift make sure your tynes are together and tilted all the way back preventing the straps from slipping off. When commencing the lift take the tension on the straps slowly ensuring they will not get caught and cause any damage to the mower.





Step 6: Getting rid of the cage

Once the zero turn has been lifted off the cage you should be able to pull the cage out of the way and safely place the zero turn on its wheels. Before disposing of the cage give it a check over as extras like the roll bar may be attached to it.





Step 7: Installing the seat

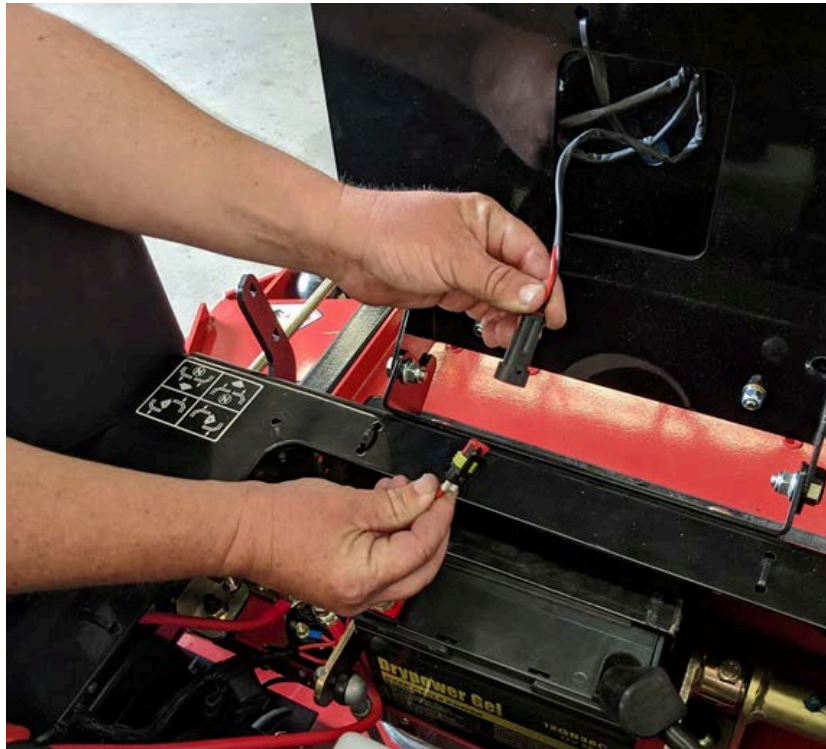
Place the seat aligned with the front seat brackets and the safety bolt on the back of the seat.

Remove the butterfly nut from the safety bolt before installing the seat.



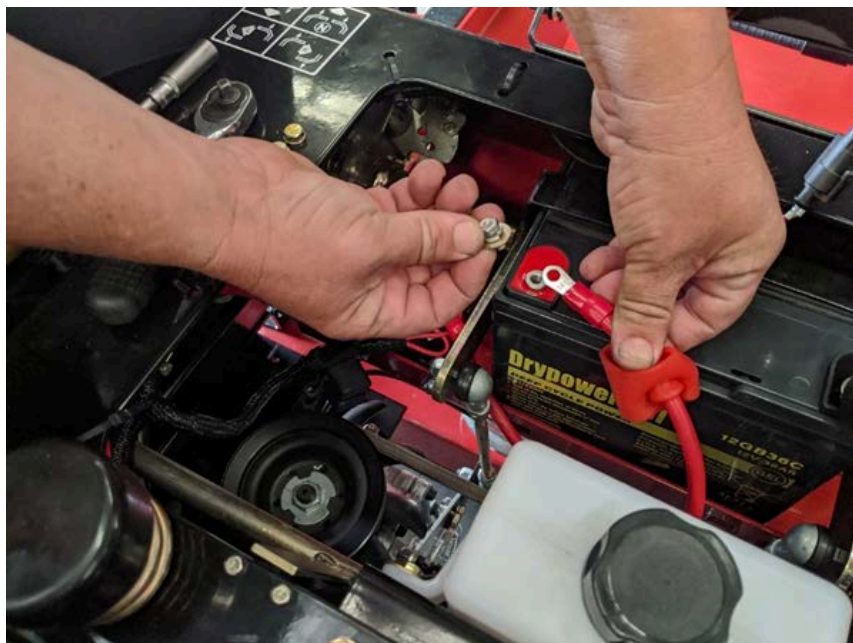


Step 8: Plug the seat sensor



Step 9: Connect the battery terminal.

Positive - Red / Negative - Black





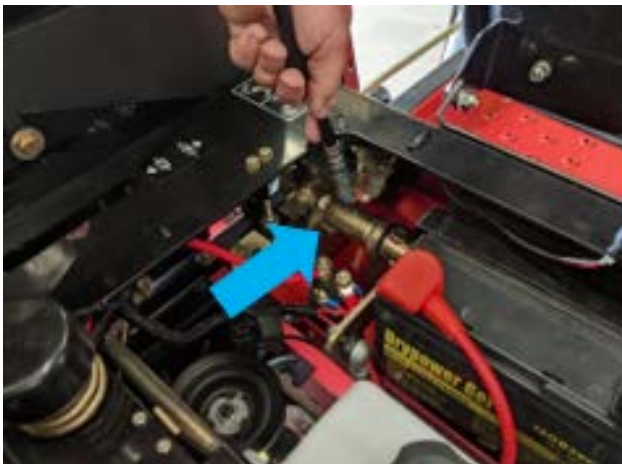
Step 10: Check the engine oil level

The engine comes with the oil. Please double-check it.



Step 11: Grease the grease nipples (7 points)

Control levers grease nipples (2)





Front wheel grease nipples (2)



Pivot weldment (deck) grease nipples (2)



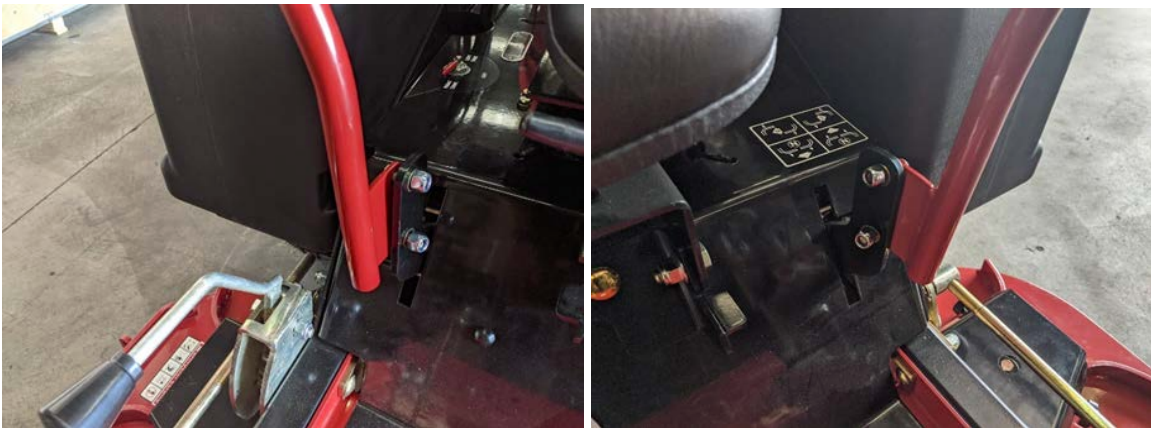
Hydro Gear weldment grease nipple (1)





Step 12: Connect the control handles (2)

It must be installed on the bracket outside.





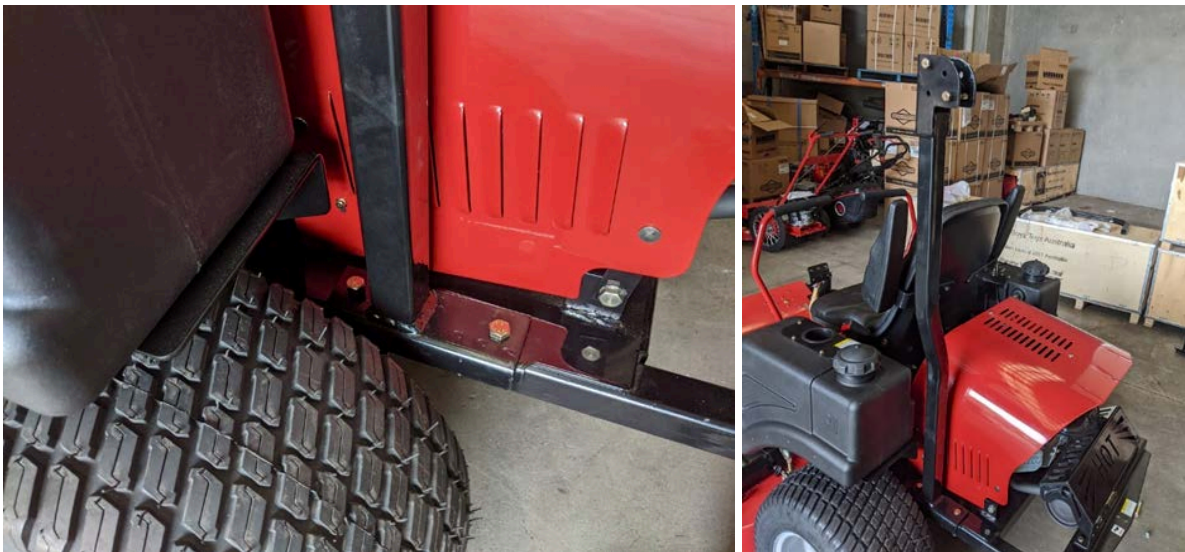
Step 13: Install the roll cage.

Remove the bolts and nuts (2 sets on each side)



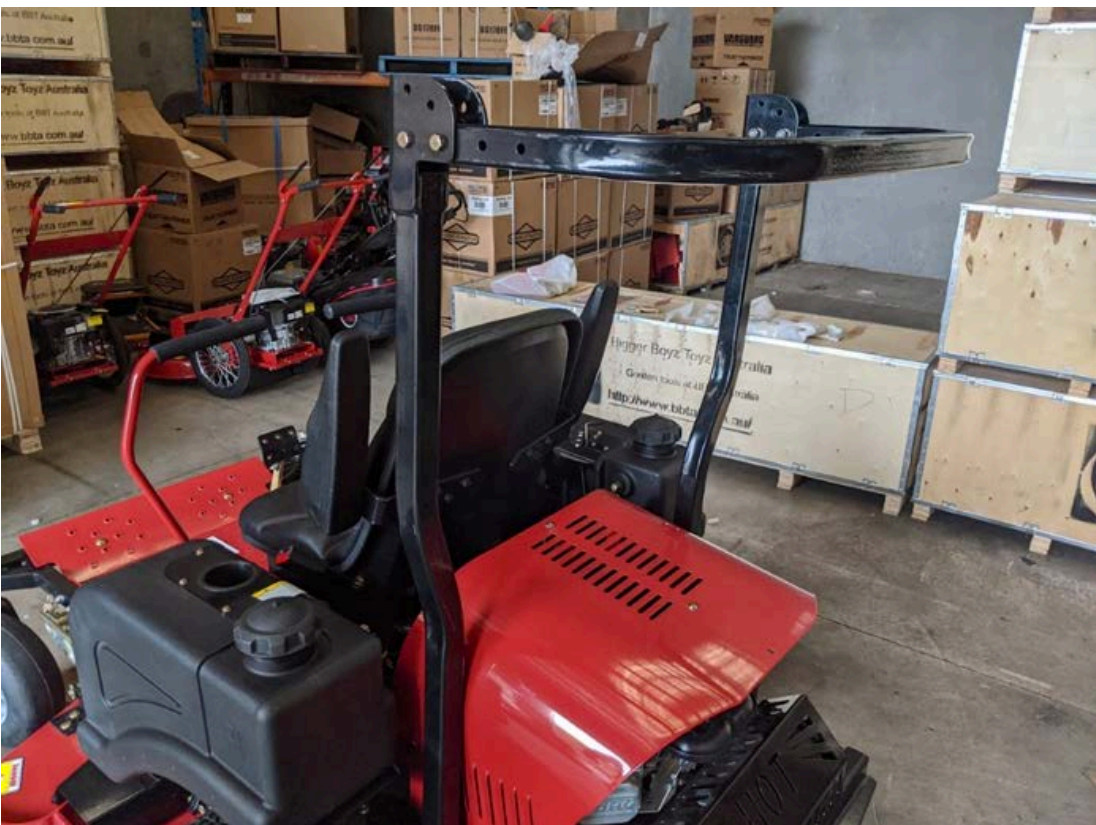
Loosely assemble the side bar.

The brackets on the vertical bar must face rear.





Connect the upper bar on the desire locations (3 possible angles) and tighten the bolts on the side and top bar.





Step 14: Starting the Zero Turn Mower.

Fuel it up (there are 2 fuel tanks)



Check for the hydrogear lever at the back of the mower





Fasten your seat belt
Choke must be full ON



Hand brake ON





Fuel tank switch selected (left or right)



Blade switch OFF (down)



Key Switch ON



Always wear safety gears for your protection.